



**SECOND-FLOOR OFFICE**  
**MLK**  
**BERKELEY**

**LOCATION:** 2105 MLK Jr. Way,  
Berkeley.

**SIZE:** Approximately 3,250 square feet.

**DESCRIPTION:** This gorgeous yet functional second-floor office space features high-end interior finishes and expansive windows with great light. Existing layout includes five private offices, a conference space, a large open work area, kitchen with dishwasher and ADA-compliant bathrooms.

Four parking spaces are part of the deal.

**RENT:** \$2.40 psf, industrial gross.

**e-LINKS**

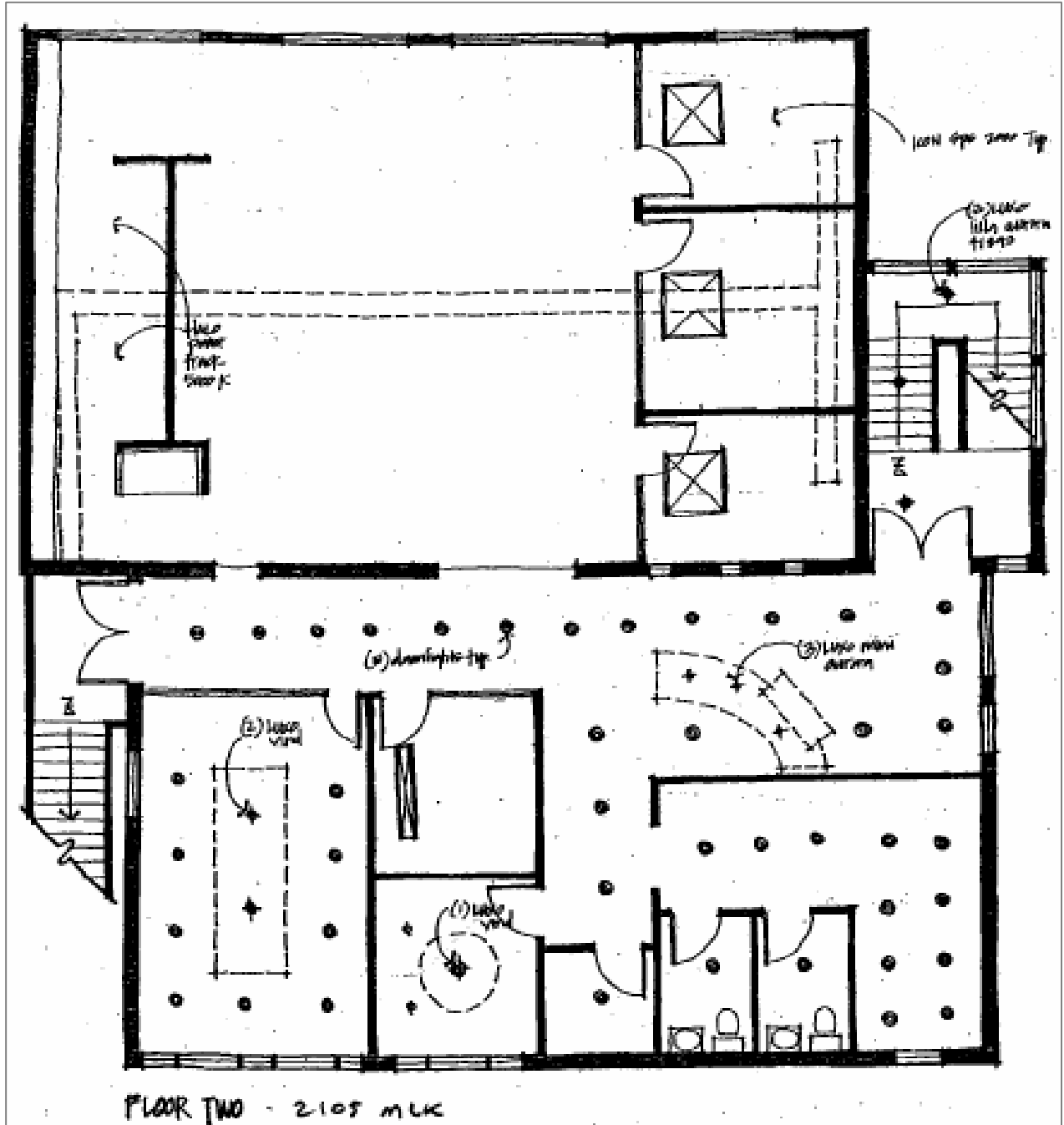
[Map](#) | [Directions](#) | [Listings](#)



Richard Odenheimer  
510-450-1414  
[rodenheimer@mrecommercial.com](mailto:rodenheimer@mrecommercial.com)  
[www.mrecommercial.com](http://www.mrecommercial.com)

# 2105 MLK AVE, Berkeley

## Office Floor Plan



All information furnished herein was provided by sources deemed reliable, but no representation is made or implied as to the accuracy thereof. All information herein is offered in good faith, but is subject to errors, omissions, change of price, prior sale, lease or financing, withdrawal without notice, rental or other conditions.