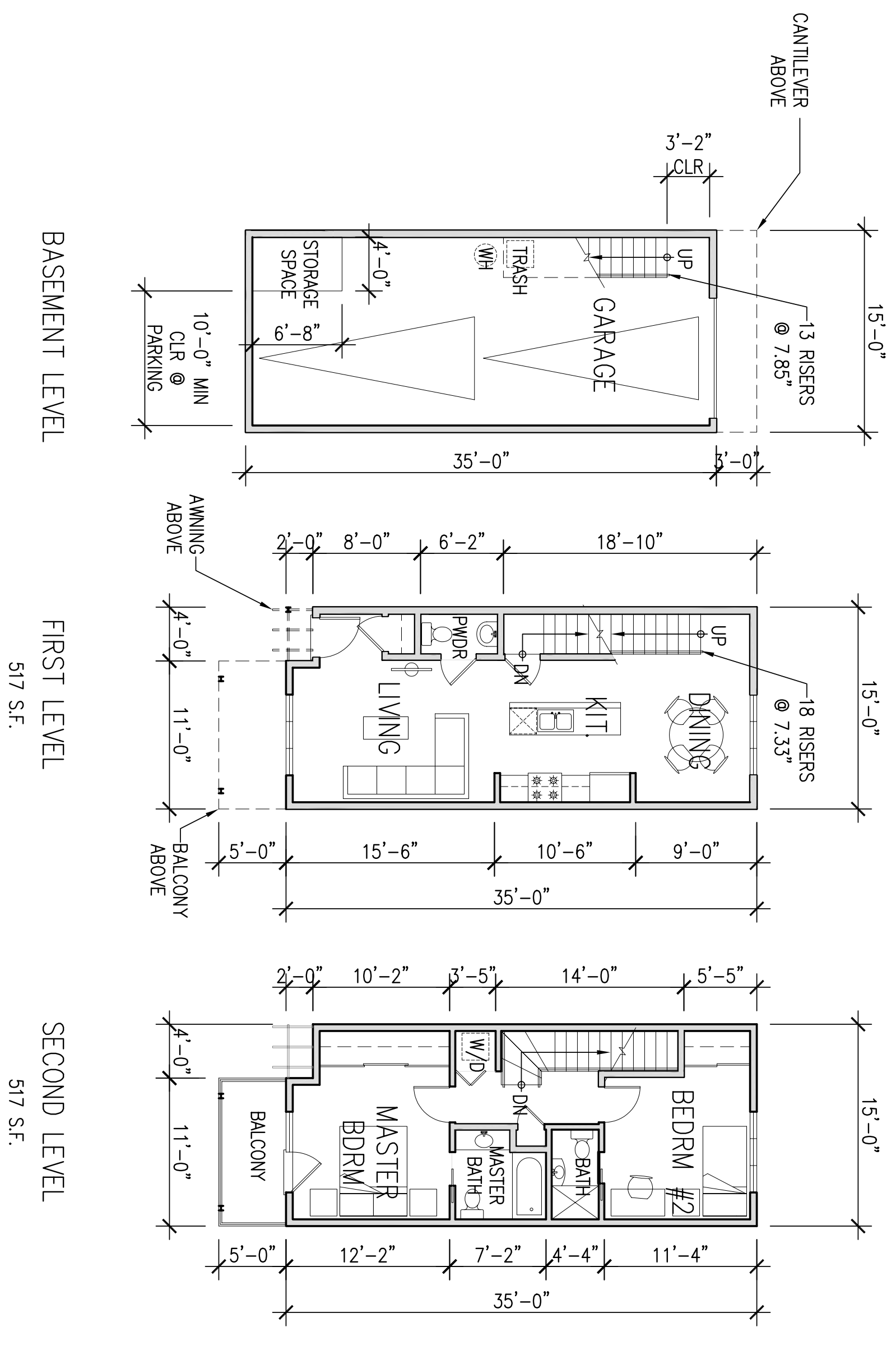
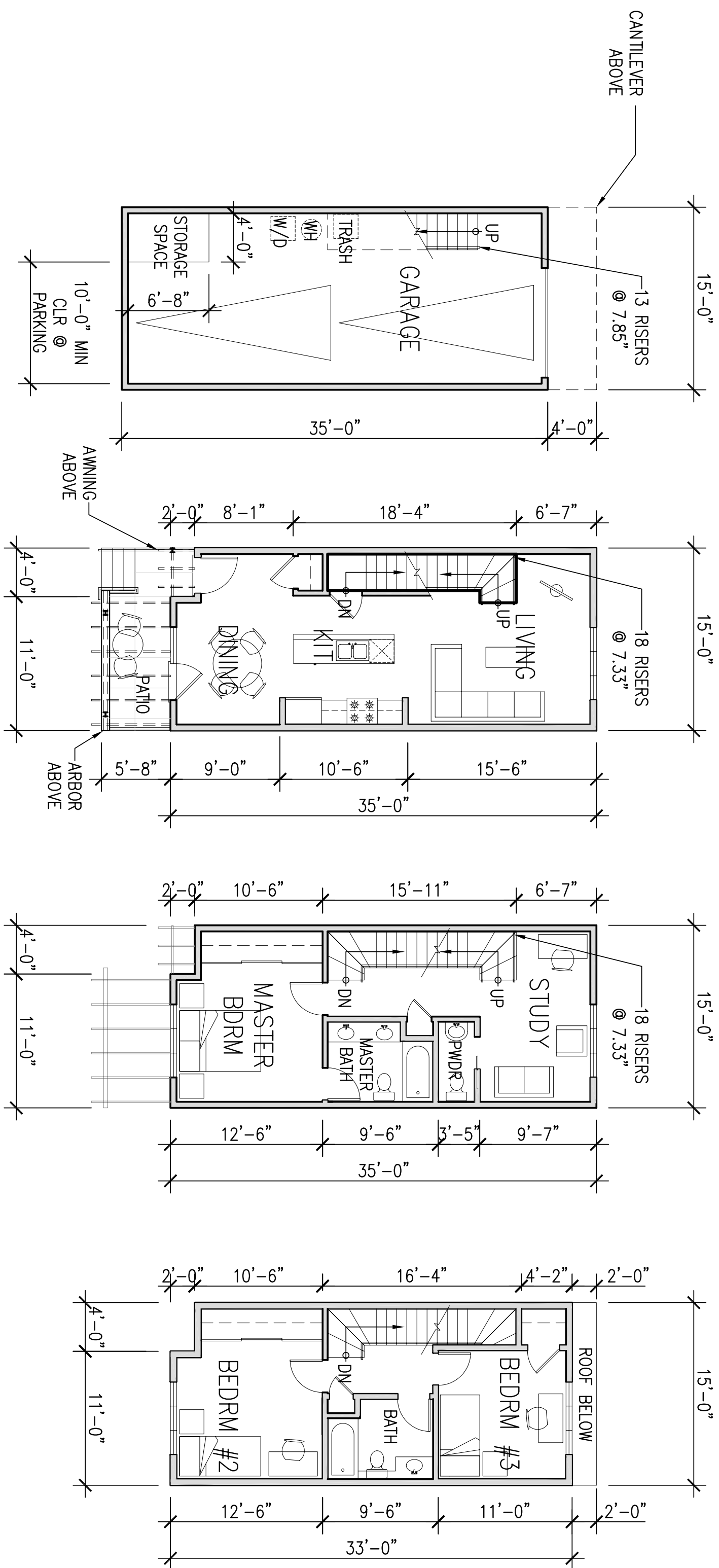


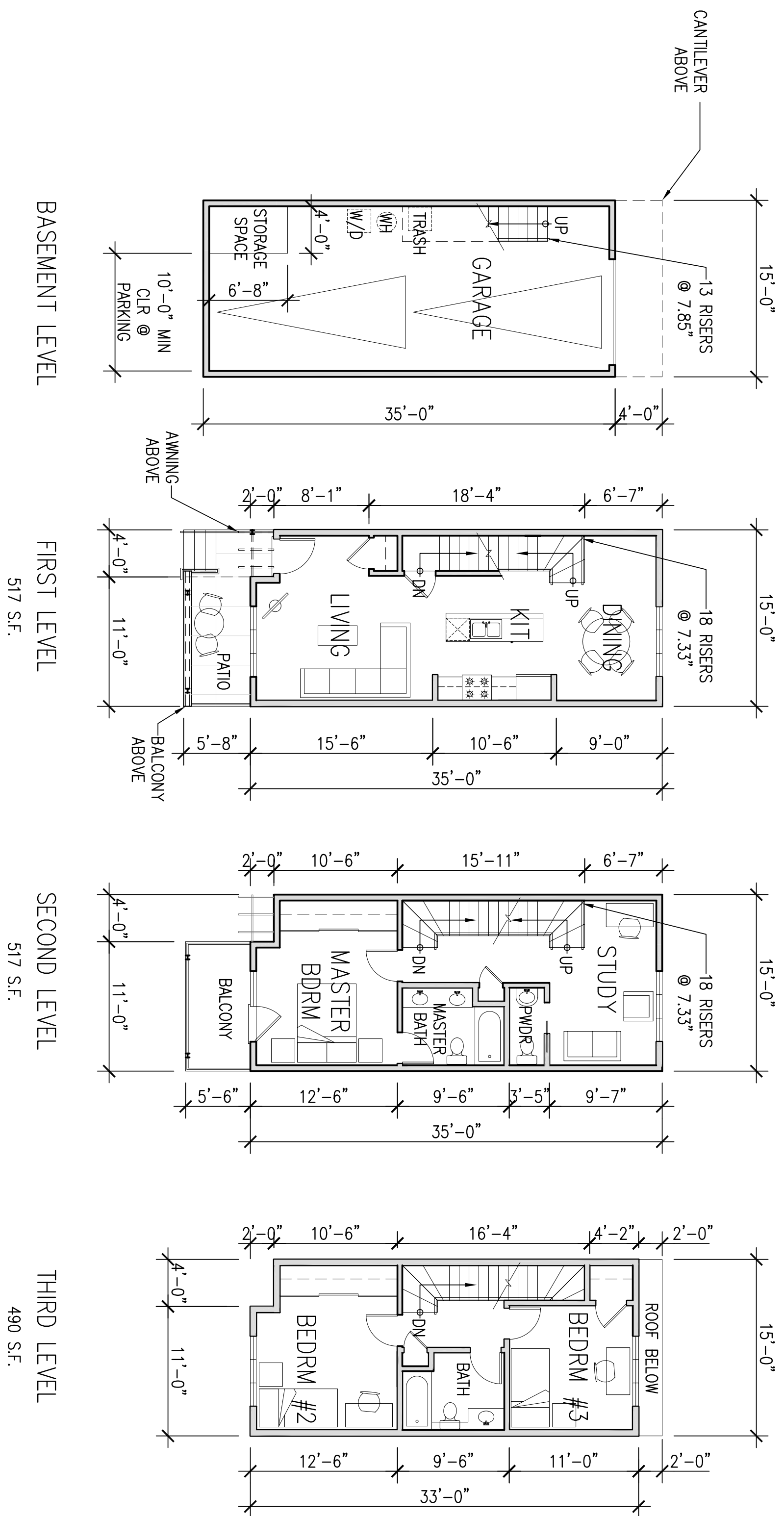
1 2-STORY UNIT AT WALKWAYS
 A-4 2 BEDROOM, 2-1/2 BATHS, 1,034 SQ FT
 1/8" = 1'-0"



2 2-STORY UNIT AT COURTYARDS
 A-4 2 BEDROOM, 2-1/2 BATHS, 1,034 SQ FT
 1/8" = 1'-0"



3 3-STORY UNIT AT WALKWAYS
 A-4 3 BEDROOM + STUDY, 2-1/2 BATHS, 1,524 SQ FT
 1/8" = 1'-0"



4 3-STORY UNIT AT COURTYARDS
 A-4 3 BEDROOM + STUDY, 2-1/2 BATHS, 1,524 SQ FT
 1/8" = 1'-0"

ANNE PHILLIPS
 ARCHITECTURE

2234 Tenth Street
 Berkeley, Ca 94710
 T 510 841 7056
 F 510 841 7077

PORTOLA TOWNHOMES
 6431 Portola Drive
 El Cerrito, CA 94530

08.10.06	USE PERMIT
10.03.06	REVISION
11.28.06	REVISION
01.10.07	REVISION

UNIT
 FLOOR
 PLANS

DRAWN BY: WW, TH
 JOB: 06-01

A-4