

A. CIRC. TABLE B-4 GIVES THE FOLLOWING TABLE FOR DETERMINING THE REQUIRED NUMBER OF ACCESSIBLE PARKING SPACES. * REQUIRED TO BE ACCESSIBLE

1-25	1
26-50	2
51-75	3
76-100	4
101-150	5
151-200	6
201-300	7
301-400	8
401-500	9
501-1000	10
1001 & OVER	11
	28% OF TOTAL
	20% FOR ADA
	100 OVER 1000

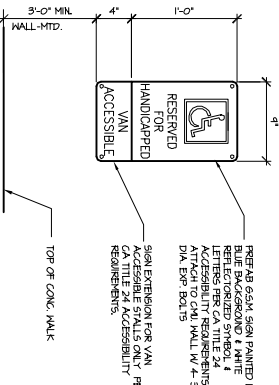
B. VAN ACCESSIBLE REQUIREMENT

ONE IN EVERY FOUR ACCESSIBLE SPACES, BUT NOT LESS THAN ONE MUST BE DESIGNATED AS VAN ACCESSIBLE. VAN ACCESSIBLE SPACES MUST BE DESIGNATED BY AN ACCESSIBLE VEHICLE SYMBOL AND MUST BE DESIGNATED VAN ACCESSIBLE. VERTICAL CLEARANCE OF AT LEAST 8 FEET, 2 INCHES IS REQUIRED AT THE SPACE.

C. TWO ACCESSIBLE SPACES MAY SHARE A SINGLE LEADING/LOADING AREA IN THE CENTER.

D. CURB BAYS ARE NOT ALLOWED TO BE DESIGNATED INTO LOADING AND UNLOADING SPACES OR VEHICULAR TRAFFIC LANE.

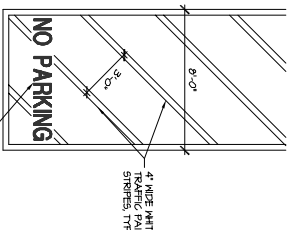
2 HANDICAPPED ACCESSIBLE PARKING REQUIREMENTS



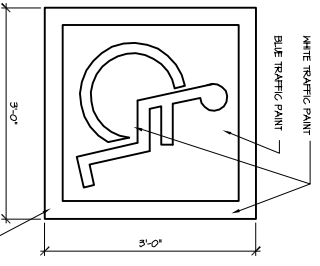
PREPARE SIGN SIGN PAINTED IN BLUE BACKGROUND & WHITE REFLECTORIZED SYMBOL & ACCESSIBILITY REQUIREMENTS. ATTACH TO CURB WALL W/ 4" 90° DN SPW BOLTS.

SEAL EXPANSION FOR VAN ACCESSIBLE STALLS ONLY PER CALIF TITLE 24 ACCESSIBILITY REQUIREMENTS.

3 HANDICAP SIGN WALL MOUNTED



4 VAN AISLE SIGNAGE



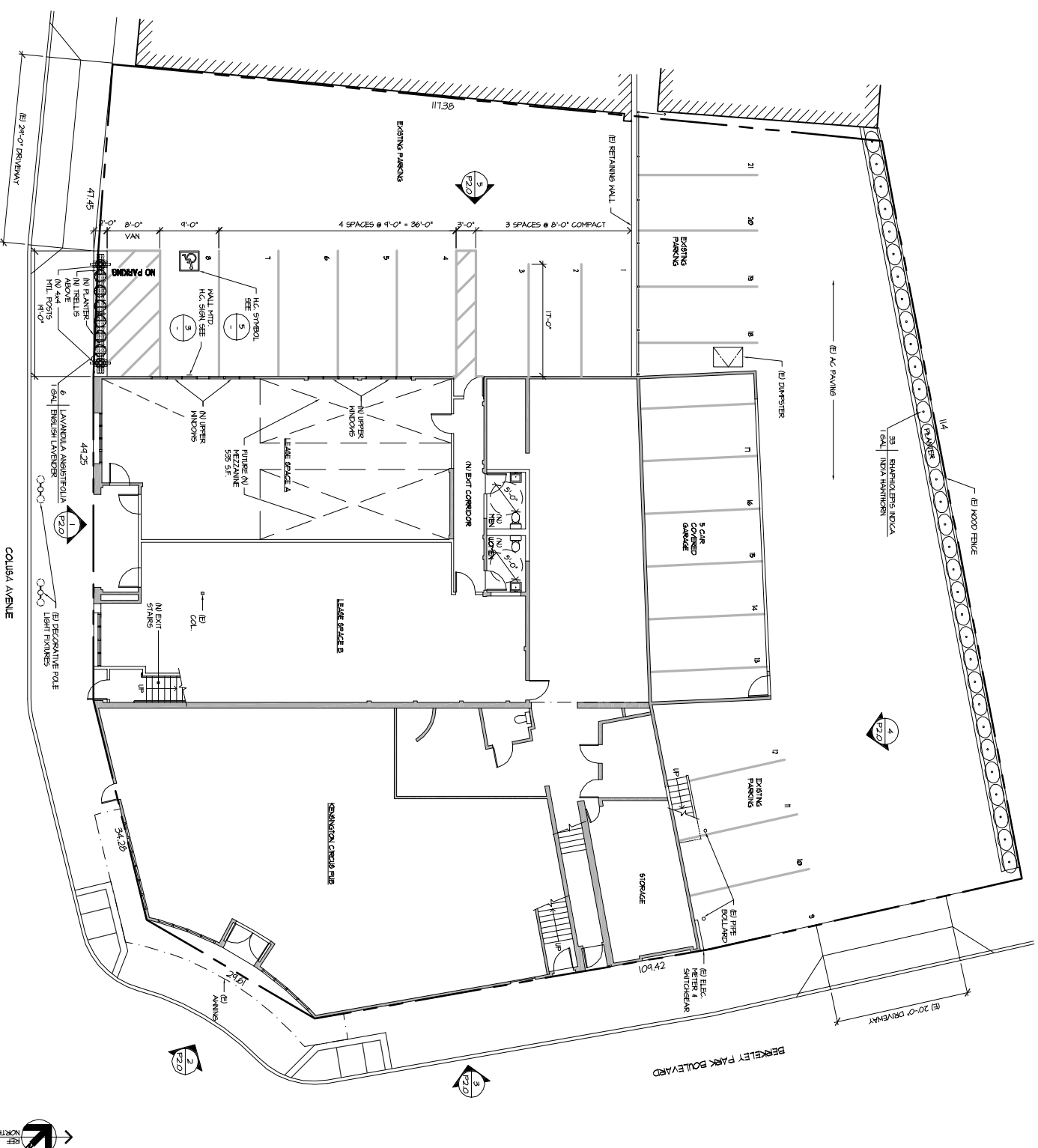
1. PROVIDE TWO COATS OF TRAFFIC PAINT, GRAY BETWEEN COATS.

2. LOCATE SYMBOL AT CENTER OF SPALL HERE SHOWN ON SITE PLAN.

3. HANDICAP SYMBOL TO CORRELATE TO CORRECT TITLE 24 ACCESSIBILITY REQUIREMENTS.

5 HANDICAP SYMBOL

1 NEW SITE PLAN



STONG & ASSOCIATES
Architects - Interiors - Planning

6333 Portero Avenue, Suite 100
El Cerrito, CA 94530
Tel. 510 232-0226
Fax. 510 237-0792
architects@stong.com
www.stong.com

REMODEL TO N. DAVID BUILDING

385 Colusa Avenue,
Kensington, CA
94707

NO.	DATE	REVISIONS DESCRIPTION
6/4/07		ISSUE TO COUNTY FOR PLANNING REVIEW

NEW SITE & FLOOR PLAN & SITE DETAILS

JOB NO. 07007
SCALE AS NOTED DATE 6/4/07
DRAWN BY: KSF/VEH
CAD FILE NO. D:\07007\07007.MLK SITE
DRAWING NO. 2 OF 4
SHEET NO.

P-1.1