

**GENERAL NOTES**

1. WHERE WALL TYPES VARY, ADJUST STUD LOCATION AS REQUIRED TO ALIGN WALL
2. DOORS NOT LOCATED BY DIMENSION SHALL BE LOCATED 4" FROM ADJACENT PERPENDICULAR WALL.
3. SEE SHEET A2.3 FOR DOOR SCHEDULE
4. SEE ELEVATIONS FOR WINDOW SILL HEIGHTS

**KEYNOTES**

- ① NEW DRINKING WATER FOUNTAIN
- ② WINDOW OPENING TO BE INFILLED
- ③ NOT USED
- ④ NOT USED
- ⑤ (N) 2A PORTABLE FIRE EXTINGUISHER @ 36" A.F.F.
- ⑥ PROVIDE RAISED LETTER/BRILLE FLOOR NUMBERS @ BOTH SIDES OF LANDING JAMBS @ 60" A.F.F.
- ⑦ PROVIDE DOOR WITH OBSTRUCTION SENSOR
- ⑧ NOT USED

**LEGEND**

- EXISTING TO REMAIN
- NEW 3-5/8" MTL STUD WALL WITH 5/8" GYP. BD. ON EACH SIDE. GYP. BD. TO CONTINUE TO UNDERSIDE OF STRUCTURE. SEE A9.1
- ELEVATION TAGS, SEE A5.1
- WINDOW TAG, SEE A9.1
- DOOR TAG, SEE A9.1

REVISIONS :  
 \_\_\_\_\_  
 \_\_\_\_\_  
 \_\_\_\_\_

APPROVALS :  
 \_\_\_\_\_  
 \_\_\_\_\_

488 19th Street  
 Oakland  
 California  
 94612  
 510 601 - 5200  
 510 601 - 1122 FAX

**Ako Architects**

CONSULTANTS :

**CHILDREN'S HOSPITAL OAKLAND**  
 FISCAL SERVICES  
 OFFICE REMODEL  
 1835 ALCATRAZ  
 BERKELEY, CALIFORNIA

SHEET TITLE:  
**FIRST FLOOR PLAN**

SCALE: 1/8" = 1'-0"

DRAWN BY: MAP

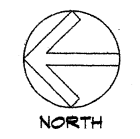
OSHPD NUMBER:

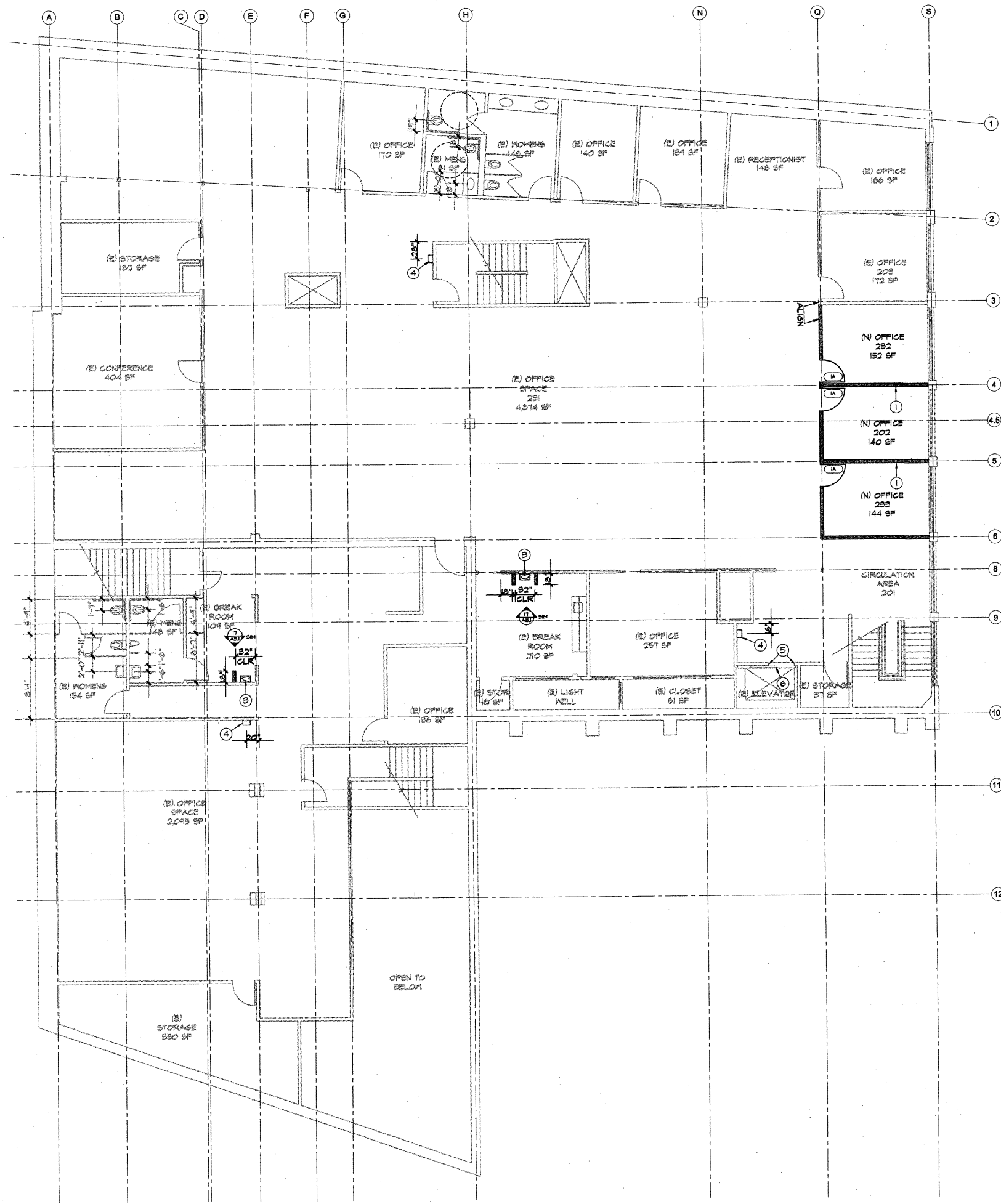
JOB NUMBER: 00-606

DATE: FEBRUARY 15, 2001

SHEET NO :  
 OF **A2.1**

**16 FIRST FLOOR PLAN**  
 1/8" = 1'-0"





**GENERAL NOTES**

- WHERE WALL TYPES VARY, ADJUST STUD LOCATION AS REQUIRED TO ALIGN WALL
- DOORS NOT LOCATED BY DIMENSION SHALL BE LOCATED 4" FROM ADJACENT PERPENDICULAR WALL.

**KEYNOTES**

- CENTER (N) WALLS ON (E) COLUMNS, TYP.
- NOT USED
- (N) DRINKING WATER FOUNTAIN
- (N) 2A PORTABLE FIRE EXTINGUISHER @ 36" A.F.F.
- PROVIDE RAISED LETTER/BRILLE FLOOR NUMBERS @ BOTH SIDES OF LANDING JAMBS @ 60" A.F.F.
- PROVIDE DOOR WITH OBSTRUCTION SENSOR

**LEGEND**

- EXISTING TO REMAIN
- NEW 3-5/8" MTL STUD WALL WITH 5/8" GYP. BD. ON EACH SIDE, GYP. BD. TO CONTINUE TO UNDERSIDE OF STRUCTURE. SEE A9.1.
- DOOR TAG, SEE A9.1
- SHEET NOTES
- ELEVATION TAG, SEE A5.1

REVISIONS :

APPROVALS :

CONSULTANTS :

**Akol Architects**  
 488 19th Street  
 Oakland  
 California  
 94612  
 510 601 5200  
 510 601 1122 FAX

**CHILDREN'S HOSPITAL OAKLAND**  
**FISCAL SERVICES**  
**OFFICE REMODEL**  
 1835 ALCATRAZ  
 BERKELEY, CALIFORNIA

SHEET TITLE:  
**SECOND FLOOR PLAN**

SCALE: 1/8" = 1'-0"

DRAWN BY: MAP

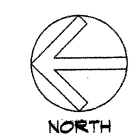
OSHPD NUMBER:

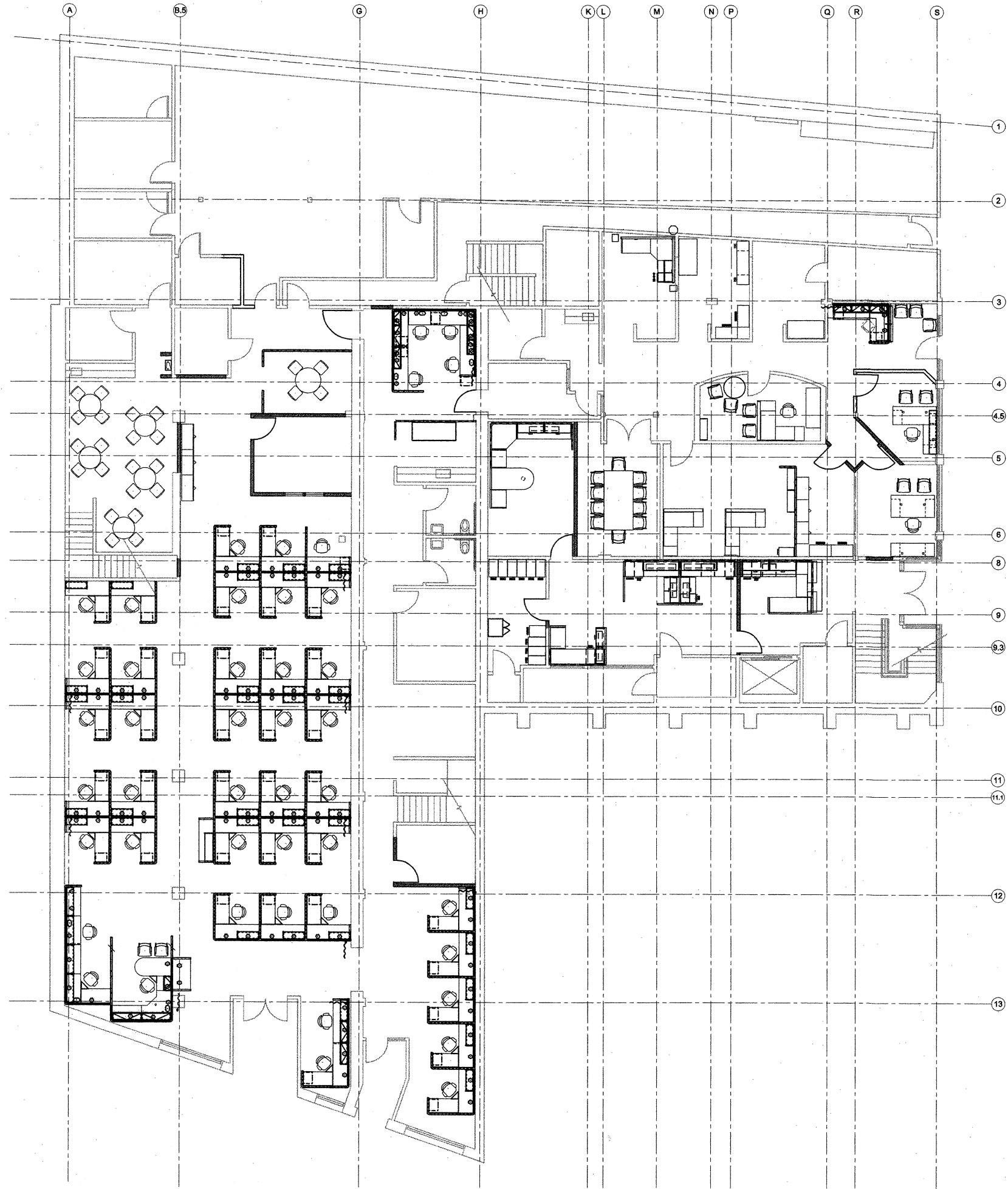
JOB NUMBER: 00-606

DATE: FEBRUARY 15, 2001

SHEET NO: **A2.2**

**16 SECOND FLOOR PLAN**  
 1/8" = 1'-0"





16 FIRST FLOOR FURNITURE PLAN 1/8" = 1'-0"



REVISIONS :

APPROVALS :

CONSULTANTS :

**Akoi Architects**  
 468 19th Street  
 Oakland  
 California 94612  
 510 601-5200  
 510 601-1122 FAX

**CHILDREN'S HOSPITAL OAKLAND**  
 FISCAL SERVICES  
 OFFICE REMODEL

1835 ALCATRAZ  
 BERKELEY, CALIFORNIA

SHEET TITLE:  
**FIRST FLOOR FURNITURE PLAN**

SCALE: 1/8" = 1'-0"

DRAWN BY: MAP

OSHPD NUMBER: 00-606

JOB NUMBER: 00-606

DATE: FEBRUARY 15, 2001

SHEET NO :  
**A2.3**

OF



16 SECOND FLOOR FURNITURE PLAN 1/8" = 1'-0"

REVISIONS :

APPROVALS :

CONSULTANTS :

**Akoi Architects**  
 488 19th Street  
 Oakland  
 California  
 94612  
 510 801 5200  
 510 801 1122 FAX

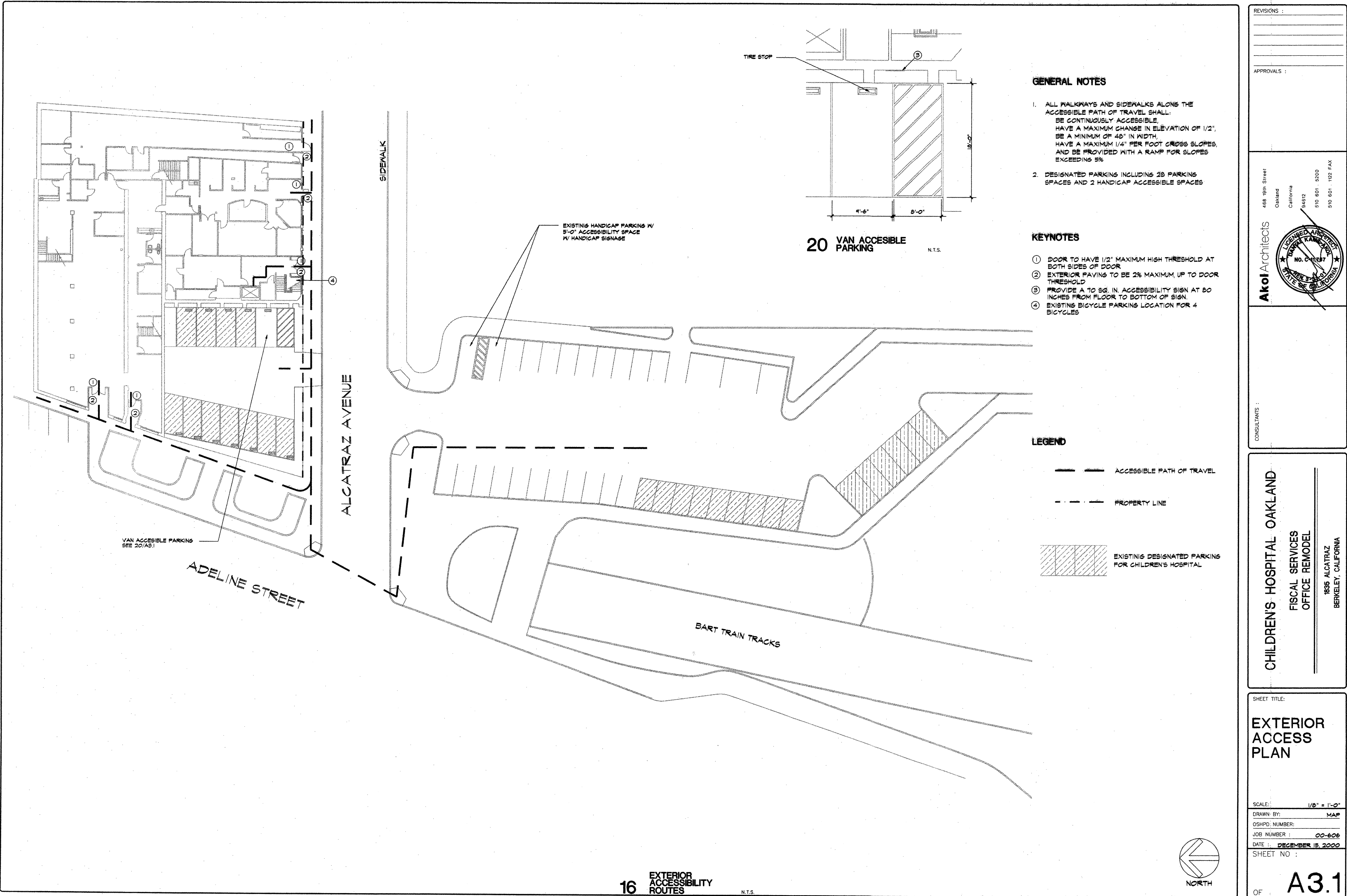


**CHILDREN'S HOSPITAL OAKLAND**  
 FISCAL SERVICES  
 OFFICE REMODEL  
 1835 ALCATRAZ  
 BERKELEY, CALIFORNIA

SHEET TITLE:  
**SECOND FLOOR FURNITURE PLAN**

SCALE: 1/8" = 1'-0"  
 DRAWN BY: MAP  
 OSHPD NUMBER:  
 JOB NUMBER: 00-606  
 DATE: FEBRUARY 13, 2001  
 SHEET NO :  
**A2.4**  
 OF





**GENERAL NOTES**

1. ALL WALKWAYS AND SIDEWALKS ALONG THE ACCESSIBLE PATH OF TRAVEL SHALL:
  - BE CONTINUOUSLY ACCESSIBLE,
  - HAVE A MAXIMUM CHANGE IN ELEVATION OF 1/2",
  - BE A MINIMUM OF 48" IN WIDTH,
  - HAVE A MAXIMUM 1/4" PER FOOT CROSS SLOPE,
  - AND BE PROVIDED WITH A RAMP FOR SLOPES EXCEEDING 5%
2. DESIGNATED PARKING INCLUDING 28 PARKING SPACES AND 2 HANDICAP ACCESSIBLE SPACES

**KEYNOTES**

- ① DOOR TO HAVE 1/2" MAXIMUM HIGH THRESHOLD AT BOTH SIDES OF DOOR
- ② EXTERIOR PAVING TO BE 2% MAXIMUM, UP TO DOOR THRESHOLD
- ③ PROVIDE A 10 SQ. IN. ACCESSIBILITY SIGN AT 80 INCHES FROM FLOOR TO BOTTOM OF SIGN.
- ④ EXISTING BICYCLE PARKING LOCATION FOR 4 BICYCLES

**LEGEND**

- ACCESSIBLE PATH OF TRAVEL
- PROPERTY LINE
- EXISTING DESIGNATED PARKING FOR CHILDREN'S HOSPITAL

REVISIONS :

APPROVALS :

468 18th Street  
Oakland  
California  
94612  
510 601 5200  
510 601 1122 FAX

**Akol Architects**

CONSULTANTS :

**CHILDREN'S HOSPITAL OAKLAND**

FISCAL SERVICES  
OFFICE REMODEL

1835 ALCATRAZ  
BERKELEY, CALIFORNIA

SHEET TITLE:

**EXTERIOR  
ACCESS  
PLAN**

SCALE: 1/8" = 1'-0"

DRAWN BY: MAP

OSHPD NUMBER:

JOB NUMBER: 00-606

DATE: DECEMBER 15, 2000

SHEET NO :

OF **A3.1**

